

Phone: +385 1 6259 373
+385 1 6259 589
+385 1 6259 372

Fax: +385 1 6259 374

AFS: LDZAYOYX

Email: aip@crocontrol.hr

URL: <http://www.crocontrol.hr>



HRVATSKA KONTROLA
ZRAČNE PLOVIDBE

Hrvatska kontrola zračne plovidbe d.o.o.
Služba zrakoplovnog informiranja (AIM/AIS)
Rudolfa Fizira 2
10410 Velika Gorica, p.p. 103
Hrvatska

AIP SUP 001/2020

Na snazi od: 27-Feb-2020

Vrijedi do: UFN

Datum izdavanja: 16-Jan-2020

LDRI – Zračna luka RIJEKA/Krk I. - Privremena suspenzija RNAV (GNSS) RWY14, RNAV (GNSS) RWY32 i objava probnih PBN zrakoplovnih navigacijskih postupaka

Ovim AIP SUP-om privremeno se suspendiraju RNAV (GNSS) RWY14 (LDRI AD 2.24.12 IAC RNAV (GNSS) RWY14, WEF 05 DEC 2019) i RNAV (GNSS) RWY32 (LDRI AD 2.24.12 IAC RNAV (GNSS) RWY32, WEF 05 DEC 2019) zrakoplovni navigacijski postupci.

Za vrijeme trajanja službene objave ovog AIP SUP-a, RNAV (GNSS) RWY14 se privremeno zamjenjuje s RNAV (GNSS) Z RWY14, a RNAV (GNSS) RWY32 se privremeno zamjenjuje s RNAV (GNSS) Z RWY32 zrakoplovnim navigacijskim postupkom, a koji se nalaze u prilogu ovog AIP SUP-a.

Ovim AIP SUP-om dostupni su i probni RNAV (GNSS) Y RWY14 (LDRI AD 2.24.12 IAC RNAV (GNSS) Y RWY14) te RNAV (GNSS) Y RWY32 (LDRI AD 2.24.12 IAC RNAV (GNSS) Y RWY32) zrakoplovni navigacijski postupci na zračnoj luci RIJEKA/Krk I. samo u svrhu provjeravanja iz zraka.

Instrumentalni zrakoplovni navigacijski postupci RNAV (GNSS) Y RWY14 i RNAV (GNSS) Y RWY32 su dostupni i koristiti će se jedino u svrhu izvođenja provjera iz zraka, jedino od strane odobrenih operatora i jedino prema odobrenju kontrole zračnog prometa RIJEKA.

Probni satelitski instrumentalni zrakoplovni navigacijski postupci temelje se na GNSS-u i sadrže sljedeće tipove postupaka za RWY14 i RWY32:

- Neprecizna prilaženja (NPA) do LNAV minimuma,
- APV postupci prilaženja s barometarskim vertikalnim navođenjem (APV Baro-VNAV) do LNAV/VNAV minimuma,
- APV SBAS postupak prilaženja s vertikalnim navođenjem podržan s European Geostationary Navigation Overlay Service (EGNOS) sustavom do LPV minimuma (SBAS APV-I).

Ovi instrumentalni zrakoplovni navigacijski postupci temelje se na postojećim ICAO kriterijima, koji su propisani u ICAO Doc. 8168 OPS/611 Vol II (ICAO PANS OPS Vol II).

Sastavni dio ovog AIP SUP-a još su:

- LDRI RNAV (GNSS) Z RWY14 – ICAO karta, RNAV tablice kodiranja i popis putnih točaka (*waypoint list*),
- LDRI RNAV (GNSS) Y RWY14 – ICAO karta, SBAS FAS Data Block, RNAV tablice kodiranja i popis putnih točaka (*waypoint list*),
- LDRI RNAV (GNSS) Z RWY32 – ICAO karta, RNAV tablice kodiranja i popis putnih točaka (*waypoint list*),
- LDRI RNAV (GNSS) Y RWY32 – ICAO karta, SBAS FAS Data Block, RNAV tablice kodiranja i popis putnih točaka (*waypoint list*).

Upišite AIP SUP 001/2020 u GEN 0.3

Ref AIP: LDRI AD 2

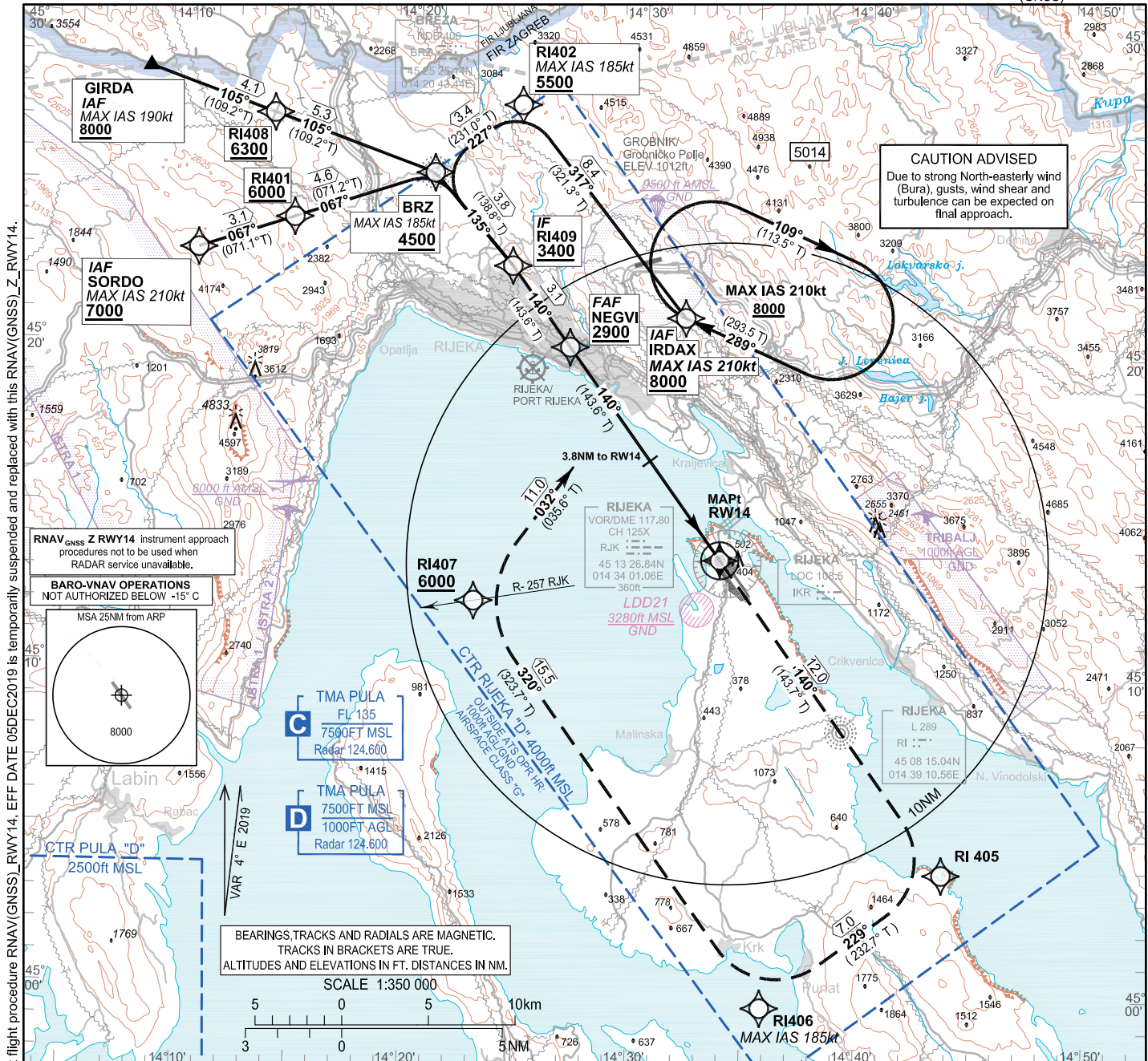
OVA STRANICA JE NAMJERNO OSTAVLJENA PRAZNA

INSTRUMENT APPROACH
CHART-ICAO

AD ELEV 278
HEIGHTS RELATED
TO THR 14 ELEV 264

PULA RADAR 124.600
RIJEKA TOWER 119.000

RIJEKA / Krk I.
CROATIA
RNAV (GNSS) Z RWY 14



CHANGE: Additional info: while AIP SUP 001/2020 is in force instrument flight procedure RNAV (GNSS) RWY 14, EFF DATE 05DEC2019 is temporarily suspended and replaced with this RNAV (GNSS) Z RWY 14.

RNAV^{GNSS} Z RWY 14 instrument approach procedures not to be used when RADAR service unavailable.

BARO-VNAV OPERATIONS NOT AUTHORIZED BELOW -15° C

MSA 25NM from ARP

CTR PULA "D" 2500ft MSL

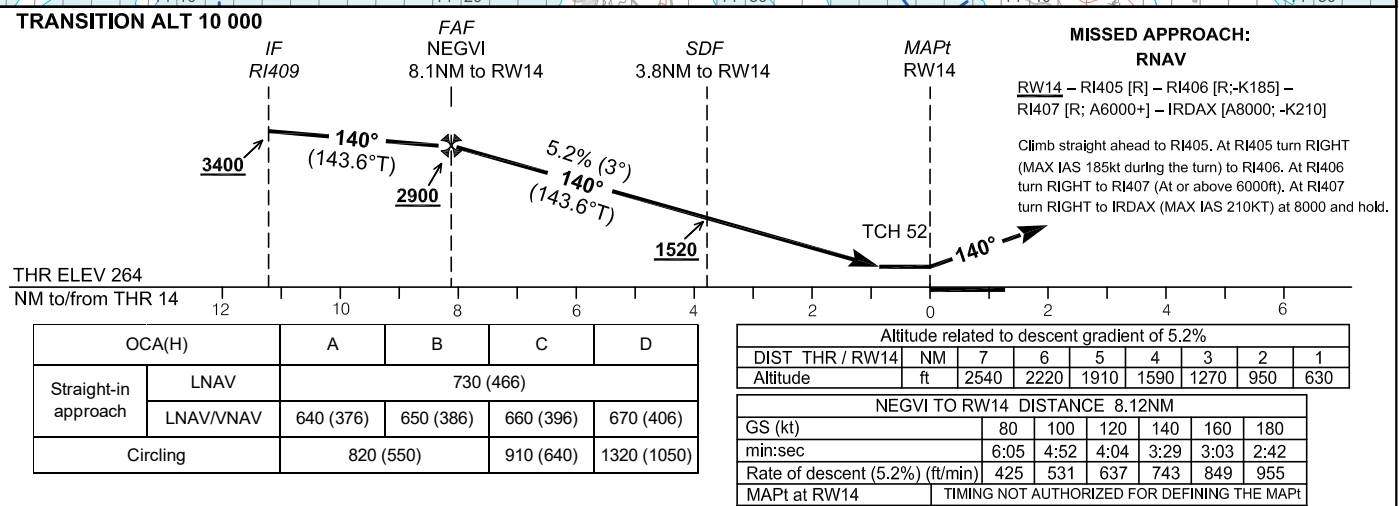
TMA PULA FL 135 7500FT MSL Radar 124.600

TMA PULA 7500FT MSL 1000FT AGL Radar 124.600

VAR 4° E 2019

BEARINGS, TRACKS AND RADIALS ARE MAGNETIC. TRACKS IN BRACKETS ARE TRUE. ALTITUDES AND ELEVATIONS IN FT. DISTANCES IN NM.

SCALE 1:350 000



NOTE: Circling for ACFT CAT B, C and D NE of aerodrome NA

RIJEKA / Krk I.
 CROATIA
 RNAV(GNSS) Z RWY 14

LDRI RNAV (GNSS) Z RWY14

Proposed tabular description for navigation database coding - APPROACH TRANSITION

Serial Number	Fix	Path descriptor	Waypoint name	Flyover	Course °M (°T)	Magnetic Variation	Distance (NM)	Turn direction	Altitude (ft)	Speed (kt)	VPA/TCH (°ft)	Remarks	NAV SPEC
010	IAF	IF	SORDO	-	-	4.00°E	-	-	+7000	-210	-	-	RNP APCH
020	-	TF	RI401	-	067° (071.1° T)	4.00°E	3.1	-	+6000	-	-	-	
030	-	TF	BRZ	-	067° (071.2° T)	4.00°E	4.6	-	+4500	-185	-	-	
040	IF	TF	RI409	-	135° (138.8° T)	4.00°E	3.8	-	+3400	-	-	-	
010	IAF	IF	GIRDA	-	-	4.00°E	-	-	+8000	-190	-	-	RNP APCH
020	-	TF	RI408	-	105° (109.2° T)	4.00°E	4.1	-	-	-	-	-	
030	-	TF	BRZ	-	105° (109.2° T)	4.00°E	5.3	-	+4500	-185	-	-	
040	IF	TF	RI409	-	135° (138.8° T)	4.00°E	3.8	-	+3400	-	-	-	
010	IAF	IF	IRDAX	-	-	4.00°E	-	-	+8000	-210	-	-	RNP APCH
020	-	TF	RI402	-	317° (321.3° T)	4.00°E	8.4	-	+5500	-185	-	-	
030	-	TF	BRZ	-	227° (231.0° T)	4.00°E	3.4	L	+4500	-	-	-	
040	IF	TF	RI409	-	135° (138.8° T)	4.00°E	3.8	-	+3400	-	-	-	

Proposed tabular description for navigation database coding - FINAL TRANSITION

Serial Number	Fix	Path descriptor	Waypoint name	Flyover	Course °M (°T)	Magnetic Variation	Distance (NM)	Turn direction	Altitude (ft)	Speed (kt)	VPA/TCH (°ft)	Remarks	NAV SPEC
010	IF	IF	RI409	-	-	4.00°E	-	-	+3400	-	-	-	RNP APCH
020	FAF	TF	NEGVI	-	140° (143.6° T)	4.00°E	3.1	-	+2900	-	-	-	
030	MAPt	TF	RW14	Y	140° (143.6° T)	4.00°E	8.1	-	-	-	3.0 / 52.0	-	
040	-	TF	RI405	-	140° (143.7° T)	4.00°E	12.0	-	-	-	-	-	
050	-	TF	RI406	-	229° (232.7° T)	4.00°E	7.0	R	-	-185	-	-	
060	-	TF	RI407	-	320° (323.7° T)	4.00°E	15.5	R	+6000	-	-	-	
070	MAHF	TF	IRDAX	-	032° (035.6° T)	4.00°E	11.0	-	8000	-210	-	-	
080	MAHF	HM	IRDAX	-	289° (293.5° T)	4.00°E	1MIN	R	8000	-210	-	Holding above 8000ft on ATC clearance only	

RNAV HOLDING tabular description

Waypoint name	Path Terminator	Inbound course °M (°T)	Leg time/ distance NM	Turn direction	Minimum altitude FT	Maximum altitude FT	Speed limit MAX IAS	Magnetic Variation	Remarks	NAV SPEC
IRDAX	HM	289° (293.5° T)	1MIN / -	R	8000	-	210KT	4°E	-	RNAV 1

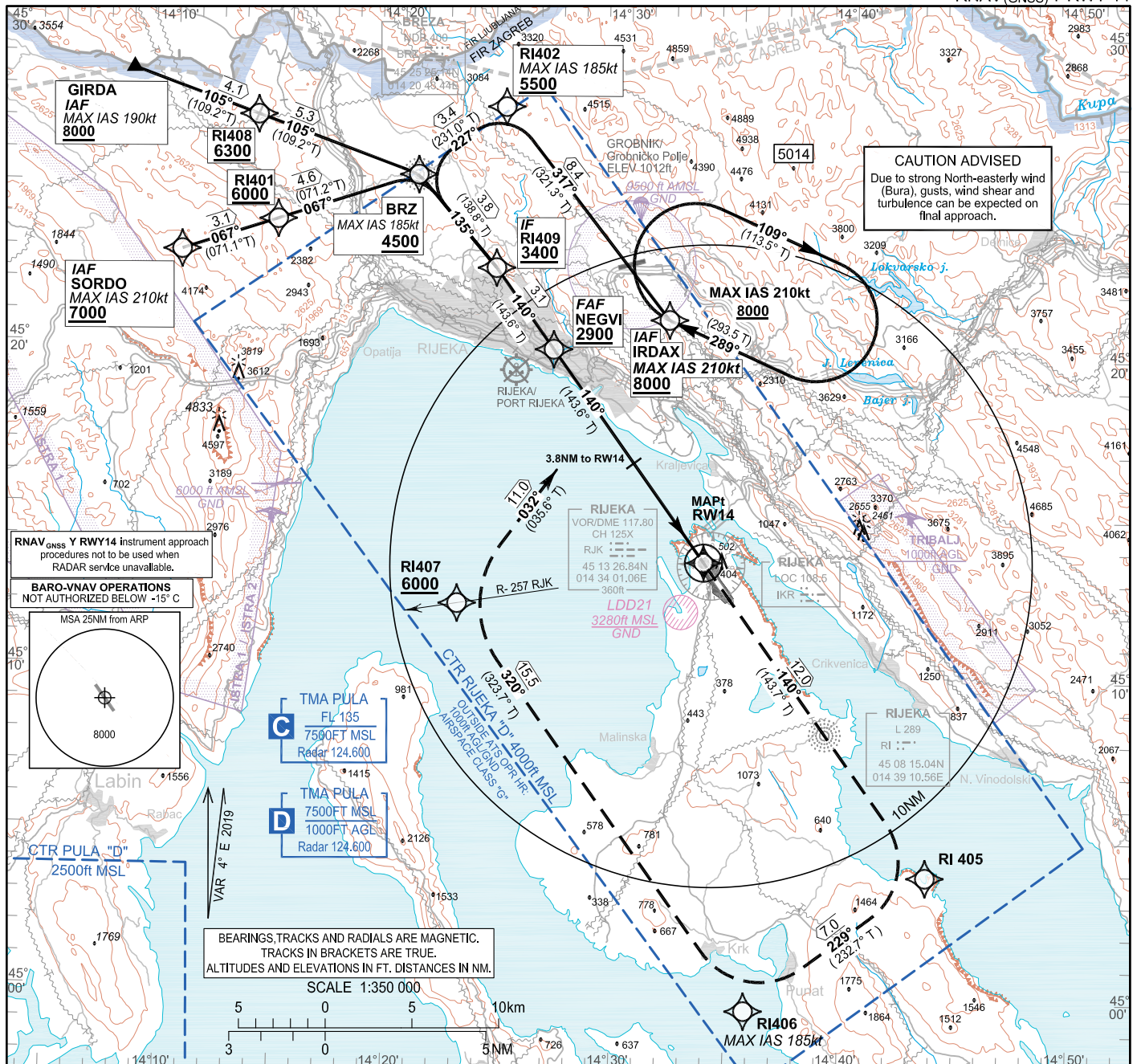
CHANGE: Additional info: while AIP SUP 001/2020 is in force instrument flight procedure RNAV(GNSS)_RWY14, EFF DATE 05DEC2019 is temporarily suspended and replaced with this RNAV(GNSS)_Z_RWY14.

CHANGE: Additional info: while AIP SUP 001/2020 is in force instrument flight procedure RNAV(GNSS)_RWY14, EFF DATE 05DEC2019 is temporarily suspended and replaced with this RNAV(GNSS)_Z_RWY14.

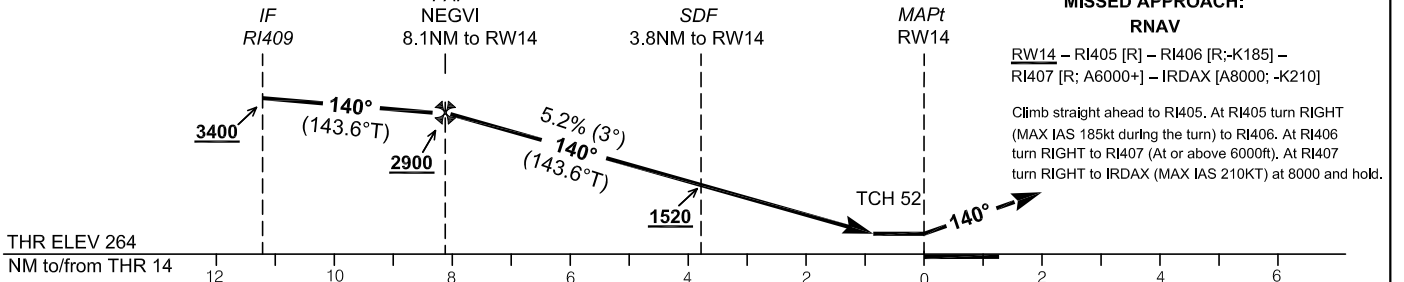
Waypoint coordinates		
Waypoint name	wgs-84 latitude	wgs-84 longitude
GIRDA	452832N	0140802E
IRDAX	452103.8N	0143157.0E
NEGVI	452004.7N	0142652.0E
SORDO	452255.7N	0141021.7E
BRZ	452525.14N	0142043.44E
RW14	451332.36N	0143341.16E
RI401	452356.5N	0141434.0E
RI402	452735.4N	0142431.6E
RI405	450351.7N	0144342.9E
RI406	445937.0N	0143552.0E
RI407	451207.2N	0142251.9E
RI408	452710.5N	0141335.3E
RI409	452234.4N	0142415.3E

OVA STRANICA JE NAMJERNO OSTAVLJENA PRAZNA
THIS PAGE INTENTIONALLY LEFT BLANK

INSTRUMENT APPROACH CHART-ICAO
 AD ELEV 278 HEIGHTS RELATED TO THR 14 ELEV 264
 SBAS CH: 42220 E14A
 PULA RADAR 124.600 RIJEKA TOWER 119.000
 RIJEKA / Krk I. CROATIA RNAV (GNSS) Y RWY 14



TRANSITION ALT 10 000



OCA(H)		A	B	C	D
Straight-in approach	LNAV	730 (466)			
	LNAV/VNAV	640 (376)	650 (386)	660 (396)	670 (406)
	LPV	640 (376)	650 (386)	660 (396)	670 (406)
Circling		820 (550)		910 (640)	1320 (1050)

Altitude related to descent gradient of 5.2%								
DIST THR / RW14	NM	7	6	5	4	3	2	1
Altitude	ft	2540	2220	1910	1590	1270	950	630
NEGVI TO RW14 DISTANCE 8.12NM								
GS (kt)	80	100	120	140	160	180		
min:sec	6:05	4:52	4:04	3:29	3:03	2:42		
Rate of descent (5.2%) (ft/min)	425	531	637	743	849	955		
MAPt at RW14	TIMING NOT AUTHORIZED FOR DEFINING THE MAPt							

NOTE: Circling for ACFT CAT B, C and D NE of aerodrome NA

CHANGE: New chart

RIJEKA / Krk I.
 CROATIA
 RNAV(GNSS) Y RWY 14

Input data

Operation Type	0
SBAS Provider	1 (EGNOS)
Airport Identifier	LDRI
Runway	14
Runway Letter	0 (None)
Approach Performance Designator	0
Route Indicator	Y
Reference Path Data Selector	0
Reference Path Identifier	E14A
LTP/FTP Latitude	451332.3610N
LTP/FTP Longitude	0143341.1580E
LTP/FTP Ellipsoidal Height (metres)	124.9
FPAP Latitude	451227.4075N
Delta FPAP Latitude (seconds)	-64.9535
FPAP Longitude	0143448.7030E
Delta FPAP Longitude (seconds)	67.5450
Threshold Crossing Height	52.0
TCH Units Selector	0 (feet)
Glidepath Angle (degrees)	3.00
Course Width (metres)	105.00
Length Offset (metres)	0
HAL (metres)	40.0
VAL (metres)	50.0

Output data

Data Block	10 09 12 04 0C 0E C8 00 01 34 31 05 92 A3 68 13 4C C4 3F 06 E1 18 8D 04 FE B2 0F 02 08 02 2C 01 64 00 C8 FA 0E 7B 73 B6
Calculated CRC Value	0E7B73B6

Required Additional Data

ICAO Code	LD
LTP/FTP Orthometric Height (metres)	80.6

CHANGE: New chart

LDRI RNAV (GNSS) Y RWY14													
Proposed tabular description for navigation database coding - APPROACH TRANSITION													
Serial Number	Fix	Path descriptor	Waypoint name	Flyover	Course °M (°T)	Magnetic Variation	Distance (NM)	Turn direction	Altitude (ft)	Speed (kt)	VPA/TCH (°/ft)	Remarks	NAV SPEC
010	IAF	IF	SORDO	-	-	4.00°E	-	-	+7000	-210	-	-	RNP APCH
020	-	TF	RI401	-	067° (071.1° T)	4.00°E	3.1	-	+6000	-	-	-	
030	-	TF	BRZ	-	067° (071.2° T)	4.00°E	4.6	-	+4500	-185	-	-	
040	IF	TF	RI409	-	135° (138.8° T)	4.00°E	3.8	-	+3400	-	-	-	
010	IAF	IF	GIRDA	-	-	4.00°E	-	-	+8000	-190	-	-	RNP APCH
020	-	TF	RI408	-	105° (109.2° T)	4.00°E	4.1	-	+6300	-	-	-	
030	-	TF	BRZ	-	105° (109.2° T)	4.00°E	5.3	-	+4500	-185	-	-	
040	IF	TF	RI409	-	135° (138.8° T)	4.00°E	3.8	-	+3400	-	-	-	
010	IAF	IF	IRDAX	-	-	4.00°E	-	-	+8000	-210	-	-	RNP APCH
020	-	TF	RI402	-	317° (321.3° T)	4.00°E	8.4	-	+5500	-185	-	-	
030	-	TF	BRZ	-	227° (231.0 T)	4.00°E	3.4	L	+4500	-	-	-	
040	IF	TF	RI409	-	135° (138.8° T)	4.00°E	3.8	-	+3400	-	-	-	
Proposed tabular description for navigation database coding - FINAL TRANSITION													
Serial Number	Fix	Path descriptor	Waypoint name	Flyover	Course °M (°T)	Magnetic Variation	Distance (NM)	Turn direction	Altitude (ft)	Speed (kt)	VPA/TCH (°/ft)	Remarks	NAV SPEC
010	IF	IF	RI409	-	-	4.00°E	-	-	+3400	-	-	-	RNP APCH
020	FAF	TF	NEGVI	-	140° (143.6° T)	4.00°E	3.1	-	+2900	-	-	-	
030	MAPt	TF	RW14	Y	140° (143.6° T)	4.00°E	8.1	-	-	-	3.0 / 52.0	-	
040	-	CF	RI405	-	140° (143.7° T)	4.00°E	12.0	-	-	-	-	-	
050	-	TF	RI406	-	229° (232.7° T)	4.00°E	7.0	R	-	-185	-	-	
060	-	TF	RI407	-	320° (323.7° T)	4.00°E	15.5	R	+6000	-	-	-	
070	MAHF	TF	IRDAX	-	032° (035.6° T)	4.00°E	11.0	-	8000	-210	-	-	
080	MAHF	HM	IRDAX	-	289° (293.5° T)	4.00°E	1MIN	R	8000	-210	-	Holding above 8000ft on ATC clearance only	RNAV 1
RNAV HOLDING tabular description													
Waypoint name	Path Terminator	Inbound course °M (°T)	Leg time/distance NM	Turn direction	Minimum altitude FT	Maximum altitude FT	Speed limit MAX IAS	Magnetic Variation	Remarks	NAV SPEC			
IRDAX	HM	289° (293.5° T)	1MIN / -	R	8000	-	210KT	4°E	-	RNAV 1			

CHANGE: New chart

RIJEKA / Krk I.
CROATIA
RNAV(GNSS) Y RWY 14

Waypoint coordinates		
Waypoint name	wgs-84 latitude	wgs-84 longitude
GIRDA	452832N	0140802E
IRDAX	452103.8N	0143157.0E
NEGVI	452004.7N	0142652.0E
SORDO	452255.7N	0141021.7E
BRZ	452525.14N	0142043.44E
RW14	451332.36N	0143341.16E
RI401	452356.5N	0141434.0E
RI402	452735.4N	0142431.6E
RI405	450351.7N	0144342.9E
RI406	445937.0N	0143552.0E
RI407	451207.2N	0142251.9E
RI408	452710.5N	0141335.3E
RI409	452234.4N	0142415.3E

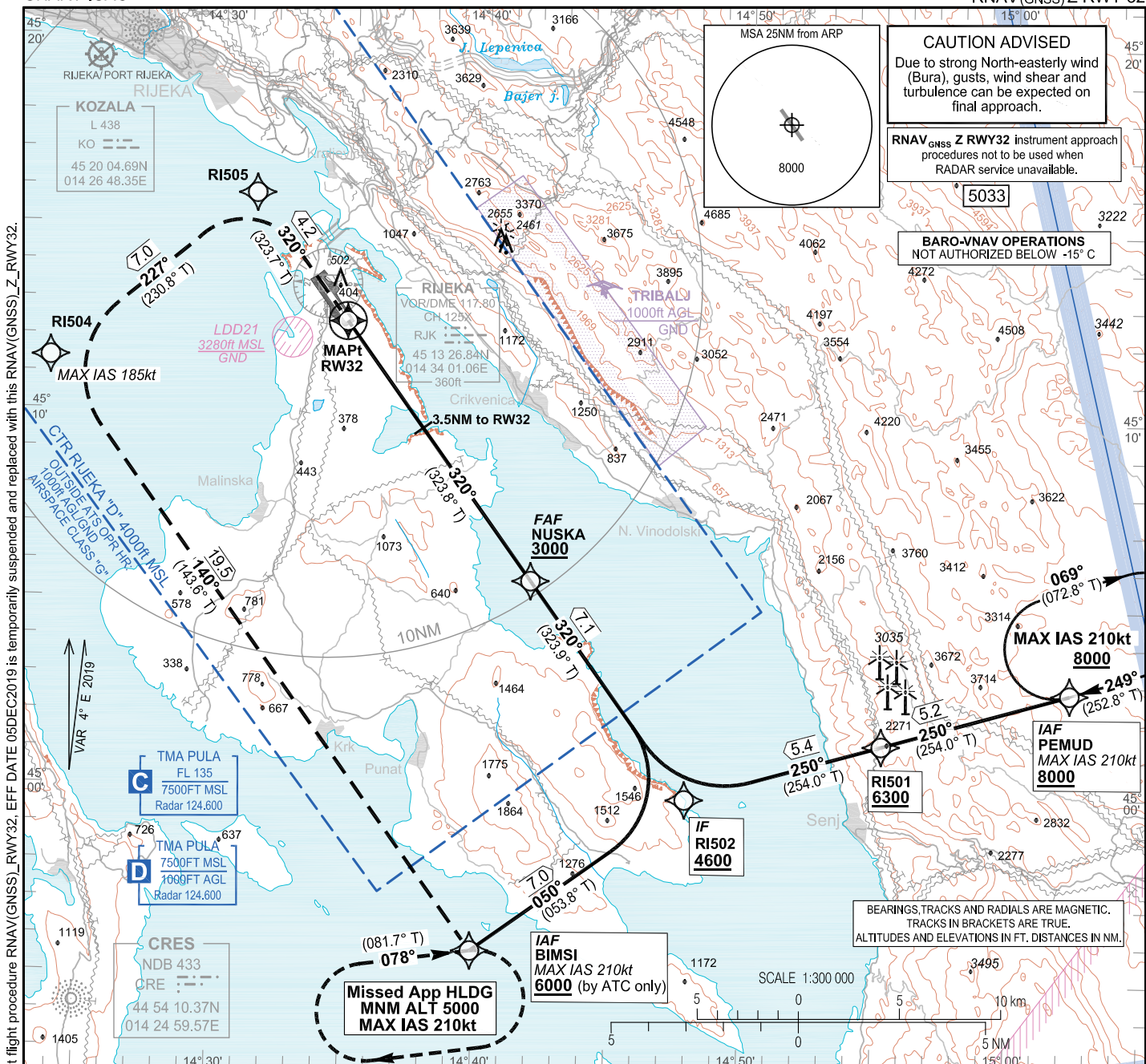
CHANGE: New chart

**INSTRUMENT APPROACH
CHART-ICAO**

AD ELEV 278
**HEIGHTS RELATED
TO THR 32 ELEV 246**

PULA RADAR 124.600
RIJEKA TOWER 119.000

**RIJEKA / Krk I.
CROATIA**
RNAV (GNSS) Z RWY 32

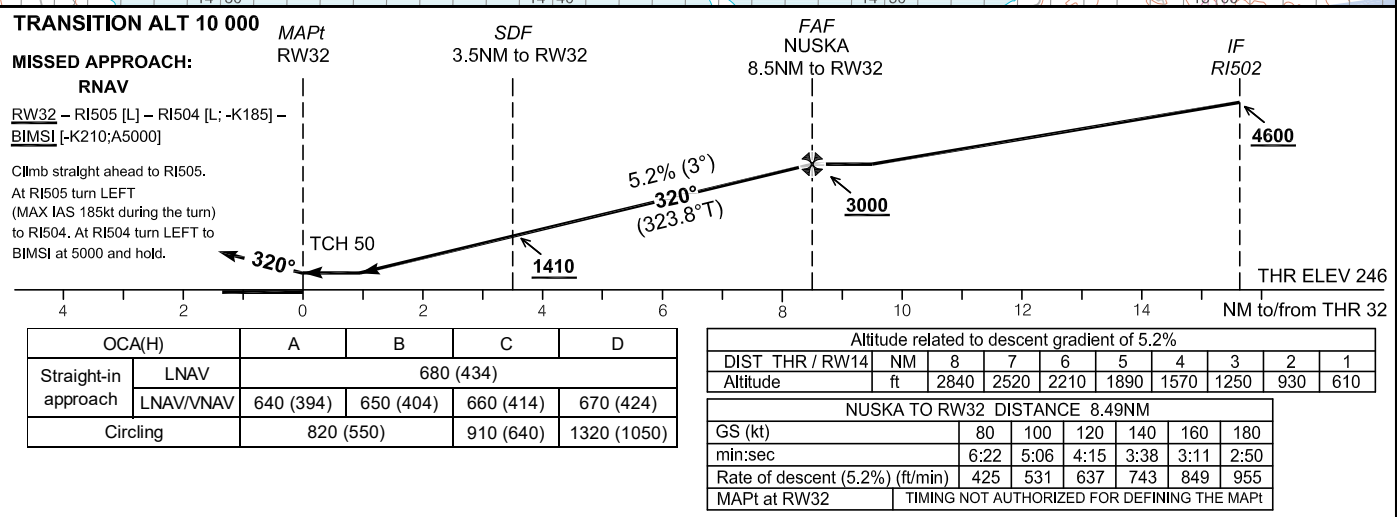


CAUTION ADVISED
Due to strong North-easterly wind (Bura), gusts, wind shear and turbulence can be expected on final approach.

RNAV^{GNSS} Z RWY32 instrument approach procedures not to be used when RADAR service unavailable.

BARO-VNAV OPERATIONS
NOT AUTHORIZED BELOW -15° C

BEARINGS, TRACKS AND RADIALS ARE MAGNETIC.
TRACKS IN BRACKETS ARE TRUE.
ALTITUDES AND ELEVATIONS IN FT. DISTANCES IN NM.



NOTE: Circling for ACFT CAT B, C and D NE of aerodrome NA

CHANGE: Additional info: while AIP SUP 001/2020 is in force instrument flight procedure RNAV (GNSS) RWY32, EFF DATE 05DEC2019 is temporarily suspended and replaced with this RNAV (GNSS) Z RWY32.

RIJEKA / Krk I.
CROATIA
RNAV(GNSS) Z RWY 32

LDRI RNAV (GNSS) Z RWY32

Proposed tabular description for navigation database coding - APPROACH TRANSITION

Serial Number	Fix	Path descriptor	Waypoint name	Flyover	Course °M (°T)	Magnetic Variation	Distance (NM)	Turn direction	Altitude (ft)	Speed (kt)	VPA/TCH (°/ft)	Remarks	NAV SPEC
010	IAF	IF	PEMUD	-	-	4.00°E	-	-	+8000	-210	-	-	RNP APCH
020	-	TF	RI501	-	250° (254.0° T)	4.00°E	5.2	-	+6300	-	-	-	
030	IF	TF	RI502	-	250° (254.0° T)	4.00°E	5.4	-	+4600	-	-	-	
010	IAF	IF	BIMSI	-	-	4.00°E	-	-	+5000	-210	-	-	RNP APCH
020	IF	TF	RI502	-	050° (053.8° T)	4.00°E	7.0	-	+4600	-	-	-	

Proposed tabular description for navigation database coding - FINAL TRANSITION

Serial Number	Fix	Path descriptor	Waypoint name	Flyover	Course °M (°T)	Magnetic Variation	Distance (NM)	Turn direction	Altitude (ft)	Speed (kt)	VPA/TCH (°/ft)	Remarks	NAV SPEC
010	IF	IF	RI502	-	-	4.00°E	-	-	+4600	-	-	-	RNP APCH
020	FAF	TF	NUSKA	-	320° (323.9° T)	4.00°E	7.1	-	+3000	-	-	-	
030	MAPt	TF	RW32	Y	320° (323.8° T)	4.00°E	8.5	-	-	-	3.0 / 50.0	-	
040	-	TF	RI505	-	320° (323.7° T)	4.00°E	4.2	-	-	-	-	-	
050	-	TF	RI504	-	227° (230.8° T)	4.00°E	7.0	L	-	-185	-	-	
060	MAHF	TF	BIMSI	-	140° (143.6° T)	4.00°E	19.5	L	5000	-210	-	-	
070	MAHF	HM	BIMSI	-	078° (081.7° T)	4.00°E	1MIN	R	5000	-210	-	Holding above 5000ft on ATC clearance only	

RNAV HOLDING tabular description

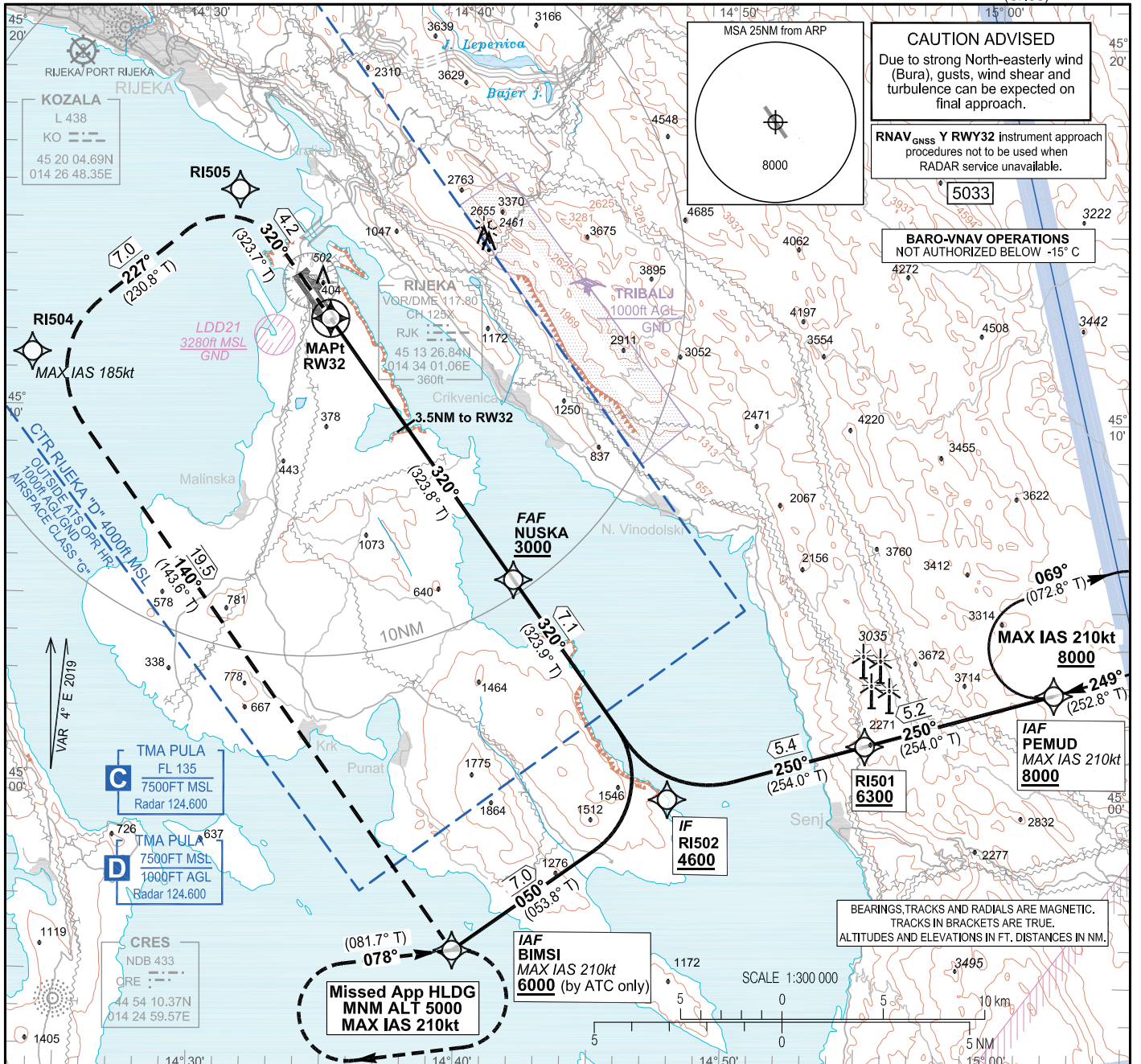
Waypoint name	Path Terminator	Inbound course °M (°T)	Leg time/distance NM	Turn direction	Minimum altitude FT	Maximum altitude FT	Speed limit MAX IAS	Magnetic variation	Remarks	NAV SPEC
PEMUD	HM	249° (252.8° T)	1MIN / -	R	8000	-	210KT	4°E	-	RNAV 1
BIMSI	HM	078° (081.7° T)	1MIN / -	R	5000	-	210KT	4°E	-	RNAV 1

Waypoint coordinates

Waypoint name	wgs-84 latitude	wgs-84 longitude
BIMSI	445542.4N	0143954.3E
NUSKA	450536.6N	0144154.7E
PEMUD	450247.1N	0150218.3E
RW32	451227.41N	0143448.70E
RI501	450120.9N	0145514.1E
RI502	445950.4N	0144751.7E
RI504	451124.1N	0142337.0E
RI505	451550.4N	0143117.4E

CHANGE: Additional info: while AIP SUP 001/2020 is in force instrument flight procedure RNAV(GNSS)_RWY32, EFF DATE 05DEC2019 is temporarily suspended and replaced with this RNAV(GNSS)_Z_RWY32.

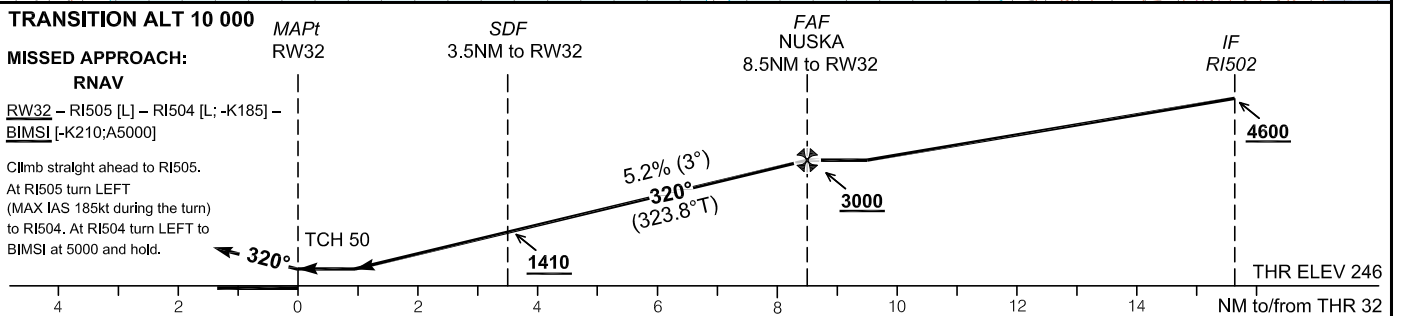
INSTRUMENT APPROACH CHART-ICAO **AD ELEV 278** **HEIGHTS RELATED TO THR 32 ELEV 246** **SBAS CH: 44289 E32A** **PULA RADAR 124.600 RIJEKA TOWER 119.000** **RIJEKA / Krk I. CROATIA RNAV (GNSS) Y RWY 32**



TRANSITION ALT 10 000

MISSED APPROACH:
RNAV
RW32 - RI505 [L] - RI504 [L; -K185] - BIMS1 [-K210; A5000]

Climb straight ahead to RI505.
 At RI505 turn LEFT (MAX IAS 185kt during the turn) to RI504. At RI504 turn LEFT to BIMS1 at 5000 and hold.



OCA(H)		A	B	C	D
Straight-in approach	LNAV	680 (434)			
	LNAV/VNAV	640 (394)	650 (404)	660 (414)	670 (424)
	LPV	640 (394)	650 (404)	660 (414)	670 (424)
Circling		820 (550)	910 (640)	1320 (1050)	

Altitude related to descent gradient of 5.2%							
DIST THR / RW14	NM	8	7	6	5	4	3
Altitude	ft	2840	2520	2210	1890	1570	1250
NUSKA TO RW32 DISTANCE 8.49NM							
GS (kt)	80	100	120	140	160	180	
min:sec	6:22	5:06	4:15	3:38	3:11	2:50	
Rate of descent (5.2%) (ft/min)	425	531	637	743	849	955	
MAPt at RW32	TIMING NOT AUTHORIZED FOR DEFINING THE MAPt						

NOTE: Circling for ACFT CAT B, C and D NE of aerodrome NA

CHANGE: New chart

RIJEKA / Krk I.
 CROATIA
 RNAV (GNSS) Y RWY 32

Input data

Operation Type	0
SBAS Provider	1 (EGNOS)
Airport Identifier	LDRI
Runway	32
Runway Letter	0 (None)
Approach Performance Designator	0
Route Indicator	Y
Reference Path Data Selector	0
Reference Path Identifier	E32A
LTP/FTP Latitude	451227.4075N
LTP/FTP Longitude	0143448.7030E
LTP/FTP Ellipsoidal Height (metres)	119.1
FPAP Latitude	451332.3610N
Delta FPAP Latitude (seconds)	64.9535
FPAP Longitude	0143341.1580E
Delta FPAP Longitude (seconds)	-67.5450
Threshold Crossing Height	50.0
TCH Units Selector	0 (feet)
Glidepath Angle (degrees)	3.00
Course Width (metres)	105.00
Length Offset (metres)	0
HAL (metres)	40.0
VAL (metres)	50.0

Output data

Data Block	10 09 12 04 0C 20 C8 00 01 32 33 05 1F A8 66 13 FE D3 41 06 A7 18 73 FB 01 4E F0 FD F4 01 2C 01 64 00 C8 FA 07 37 F3 50
Calculated CRC Value	0737F350

Required Additional Data

ICAO Code	LD
LTP/FTP Orthometric Height (metres)	75.0

CHANGE: New chart

LDRI RNAV (GNSS) Y RWY32													
Proposed tabular description for navigation database coding - APPROACH TRANSITION													
Serial Number	Fix	Path descriptor	Waypoint name	Flyover	Course °M (°T)	Magnetic Variation	Distance (NM)	Turn direction	Altitude (ft)	Speed (kt)	VPA/TCH (°/ft)	Remarks	NAV SPEC
010	IAF	IF	PEMUD	-	-	4.00°E	-	-	+8000	-210	-	-	RNP APCH
020	-	TF	RI501	-	250° (254.0° T)	4.00°E	5.2	-	+6300	-	-	-	
030	IF	TF	RI502	-	250° (254.0° T)	4.00°E	5.4	-	+4600	-	-	-	
010	IAF	IF	BIMSI	-	-	4.00°E	-	-	+5000	-210	-	-	RNP APCH
020	IF	TF	RI502	-	050° (053.8° T)	4.00°E	7.0	-	+4600	-	-	-	
Proposed tabular description for navigation database coding - FINAL TRANSITION													
Serial Number	Fix	Path descriptor	Waypoint name	Flyover	Course °M (°T)	Magnetic Variation	Distance (NM)	Turn direction	Altitude (ft)	Speed (kt)	VPA/TCH (°/ft)	Remarks	NAV SPEC
010	IF	IF	RI502	-	-	4.00°E	-	-	+4600	-	-	-	RNP APCH
020	FAF	TF	NUSKA	-	320° (323.9° T)	4.00°E	7.1	-	+3000	-	-	-	
030	MAPt	TF	RW32	Y	320° (323.8° T)	4.00°E	8.5	-	-	-	3.0 / 50.0	-	
040	-	CF	RI505	-	320° (323.7° T)	4.00°E	4.2	-	-	-	-	-	
050	-	TF	RI504	-	227° (230.8° T)	4.00°E	7.0	L	-	-185	-	-	
060	MAHF	TF	BIMSI	-	140° (143.6° T)	4.00°E	19.5	L	5000	-210	-	-	
070	MAHF	HM	BIMSI	-	078° (081.7° T)	4.00°E	1MIN	R	5000	-210	-	Holding above 5000ft on ATC clearance only	RNAV 1
RNAV HOLDING tabular description													
Waypoint name	Path Terminator	Inbound course °M (°T)	Leg time/distance NM	Turn direction	Minimum altitude FT	Maximum altitude FT	Speed limit MAX IAS	Magnetic variation	Remarks	NAV SPEC			
PEMUD	HM	249°	1MIN /	R	8000	-	210KT	4°E	-	RNAV 1			
		(252.8° T)	-										
BIMSI	HM	078°	1MIN /	R	5000	-	210KT	4°E	-	RNAV 1			
		(081.7° T)	-										
Waypoint coordinates													
Waypoint name	wgs-84 latitude	wgs-84 longitude											
BIMSI	445542.4N	0143954.3E											
NUSKA	450536.6N	0144154.7E											
PEMUD	450247.1N	0150218.3E											
RW32	451227.41N	0143448.70E											
RI501	450120.9N	0145514.1E											
RI502	445950.4N	0144751.7E											
RI504	451124.1N	0142337.0E											
RI505	451550.4N	0143117.4E											

CHANGE: New chart

OVA STRANICA JE NAMJERNO OSTAVLJENA PRAZNA
THIS PAGE INTENTIONALLY LEFT BLANK